



PID CONTROLLERS

with diagnostics



Powered by Innovation

Ready to use, for many applications

Quick setup of most common parameters

Pre-set configurations for plastics and packaging applications

High Visibility Display

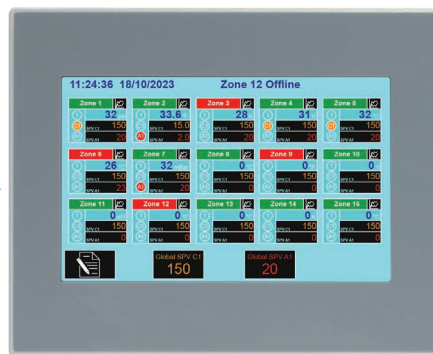
The large alphanumeric display allows optimal visibility and clarity in all industrial environments

Single or double intervention without giving up alarms

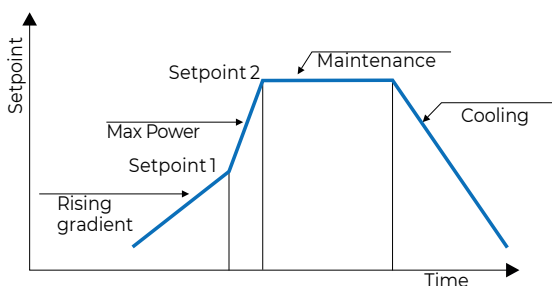
Serial always available



Serial communication



Pre-programmed cycle

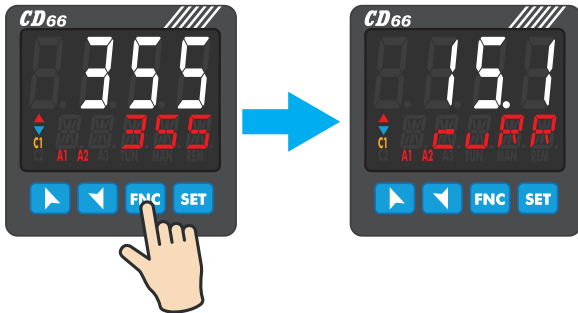


The pre-programmed cycle function allows setting a timed work cycle. The process follows a sequence of controlled heating, increasing to maximum power, maintaining the temperature for a specified period, and gradual cooling to ambient temperature. After this, the command is disabled, and the instrument displays "Stop".

Available for CD66

■ Main parameters always in the foreground or visible with a click

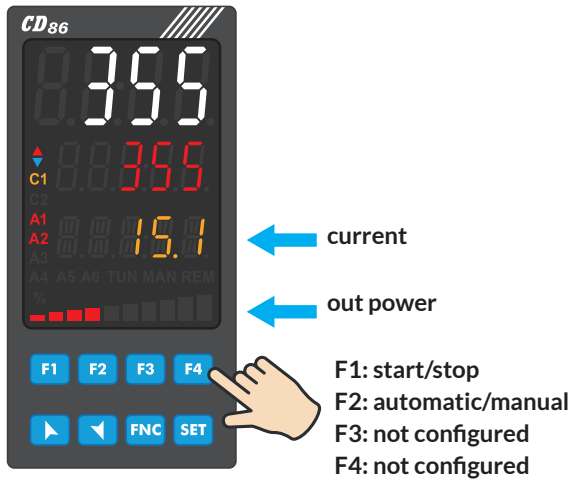
CD66: diagnostics and current value visible with one click



Function key

In the default configuration, clicking the Function (FNC) button displays the current value.

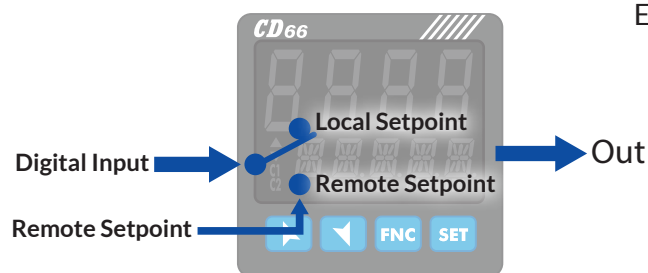
CD86: diagnostics and current value always visible



In the default configuration, the current value is always visible.

Function keys F3 and F4 are user-configurable

■ Double Setpoint, Remote Setpoint



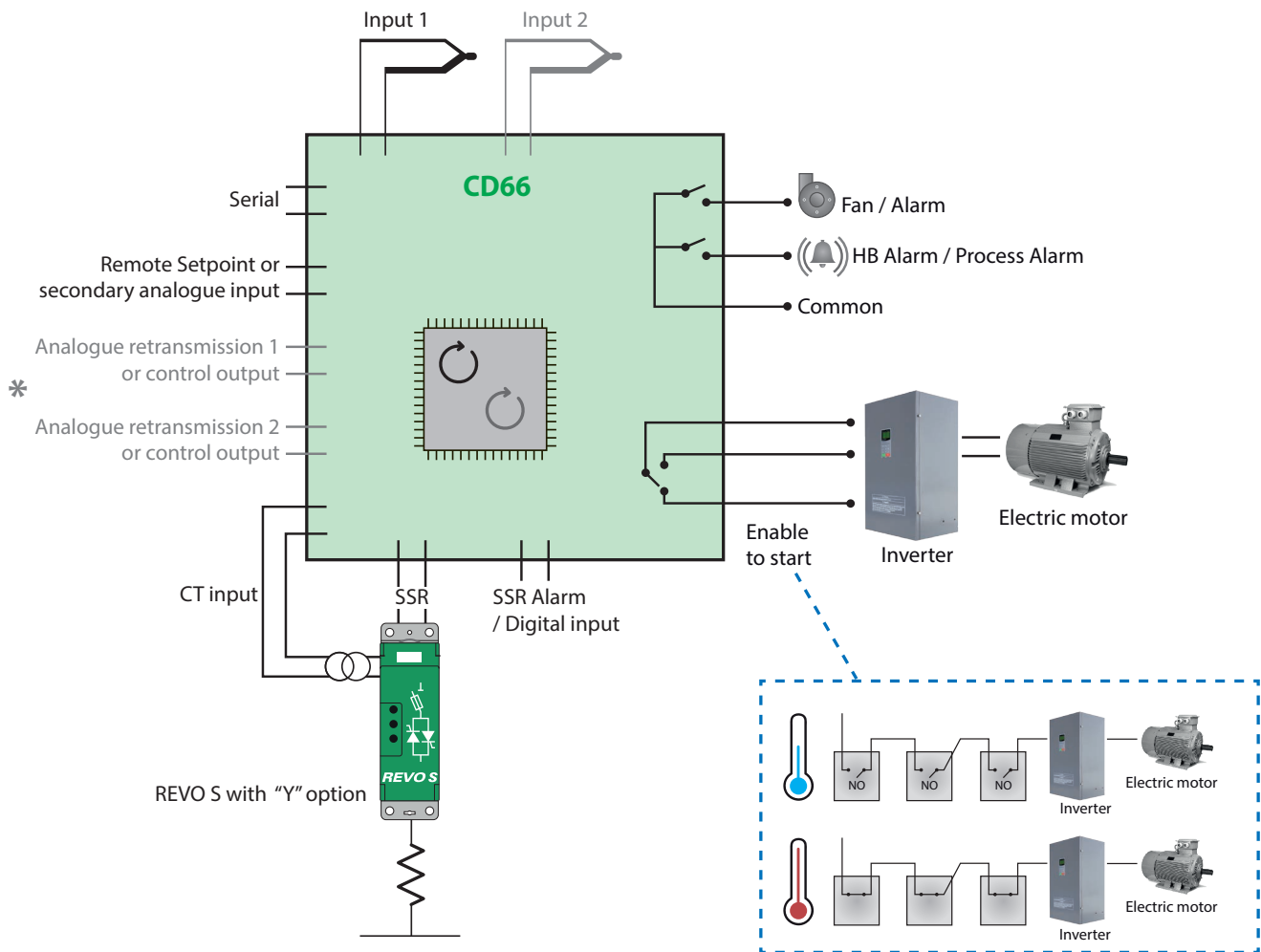
Everything you need in one model (CD66)

CD66 Controller



General features

Dimensions	48 x 48 x 105 mm
Material	Box: PC UL94V2 self-extinguishing, front panel: PC UL94V2
Weight	Approx. 185 g
Sealing	Front panel: IP65, Box and terminal blocks: IP20
Operating conditions	Temperature 0..45 °C, humidity 35..95 RH%
Approvals	CE, UL
Power Supply	115÷230 Vac ±15% 50/60 Hz - galvanic isolation 2,5KV 24 Vac/dc ±15% 50/60 Hz - galvanic isolation 2,5KV
Power Consumption	6 Watt/VA
Display	4 digits 0,52", 5 digits 0,30"
Analogue inputs	2 x Ris. 16bit, selectable for TC type K, S, R, J, T, N, B ((automatic compensation of the cold junction -25..85°C, ±0,2% F.S. ±1 digit F.S.), Thermoresistances PT100, PT500, PT1000, Ni100, PTC1K, NTC10K (β 3435K), process signals 0..10 V (50000 points), 0/4..20mA (40000 points), 0..60 mV (25000 points), potentiometer 1..150 KΩ (50000 points)
Sampling time	Programmable up to 2,1 ms (frequency up to 470 Hz)
CT input	1x T.A. 50 mA, 800 μs - 4096 points
Digital Inputs	4x PNP (overlapped to SSR outputs)
Uscite digitali	2x SSR 12 / 24 Vdc - 25 mA max (overlapped to inputs)
Uscita Ausiliaria	12/24 Vdc - 30mA max for sensor power supply
Relay output	3x 2 A - 250 Vac resistive load
Analogue output	1x Selezione 4..20 mA (40000 punti ± 0,2% F.S.) o 0÷10 Vdc (40000 punti ± 0,2% F.S.) for command or retransmission PV / SPV
Serial communication	RS485 (1200..115200 Baud) opto isolated
USB	1x micro USB for programming via PC



* Not configured in the default version for plastics machines.
Contact our technical department for more information

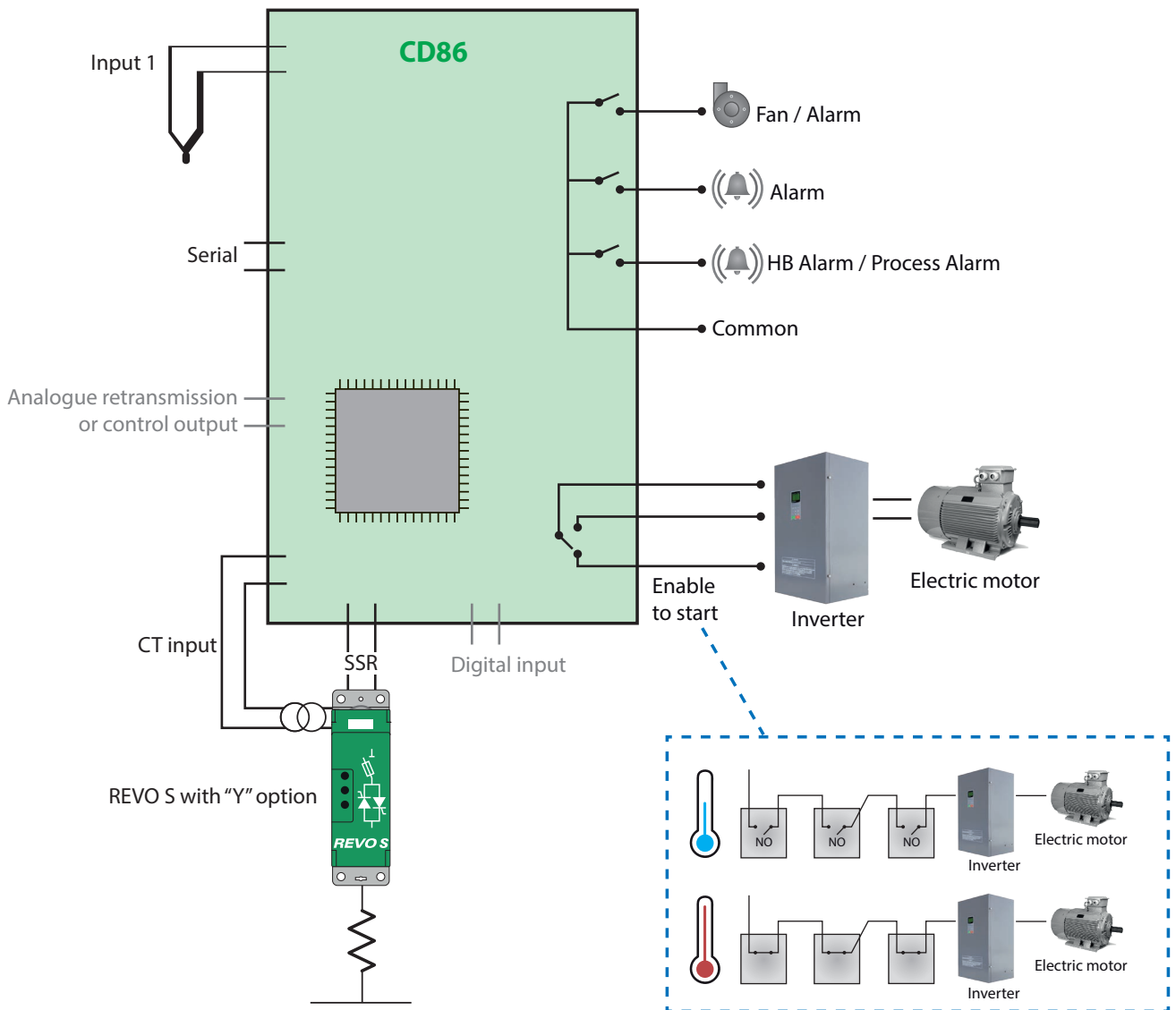
	1	2	3	4	5	6	7	8	9	10	11	12	13	14	15	16
ORDER CODE	C	D	6	6	-	-	-	2	3	0	4	8	5	C	T	M
VERSION	3	4														
Description	cod															
CD66 PID Controller 48x48 2AI, 2AO, 4DI, / 0,3 Relè	6	6														
POWER SUPPLY	5	6	7	8	9	10										
Description	cod															
115÷230 Vac	1	1	5	2	3	0										
24 Vac/dc	0	2	4	2	3	0										
COMMUNICATION											11	12	13			
Description							cod									
RS485							4	8	5							
CURRENT TRANSFORMER											14	15				
Descrizione							cod									
CT input 005							C	T								
LOOP															16	
Description							cod									
2 Loop							M									

CD86 Controller



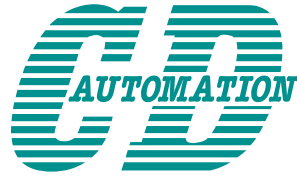
General features

Dimensions	48 x 96 x 69 mm
Material	Box: PC UL94V2 self-extinguishing, front panel: PC UL94V2
Weight	Approx. 245 g
Sealing	Front panel: IP65, Box and terminal blocks: IP20
Operating conditions	Temperature 0..45 °C, humidity 35..95 RH%
Approvals	CE
Power supply	24..230 V AC / DC $\pm 15\%$ 50/60 Hz - galvanic isolation 2,5KV
Consumption	8 Watt/VA 10 Watt/VA
Display	4 digits 0,63" + 5 digits 0,39" + 5 digits 0,33" + bar graph
Analogue inputs	1 x Ris. 16bit, programmable for thermocouples K, S, R, J, T, N, B (automatic compensation of cold junction -25..85°C, $\pm 0,2\%$ F.S. ± 1 digit F.S.), Thermoresistances PT100, PT500, PT1000, Ni100, PTC1K, NTC10K (β 3435K), process signals 0..10 V (50000 points), 0/4..20mA (40000 points), 0..60 mV (25000 points), potentiometer 1..150 K Ω (50000 points)
Sampling time	Programmable up to 2,1 ms (frequency up to 470 Hz)
CT input	1x T.A. 50 mA, 800 μ s - 4096 points
Digital inputs	2x PNP 4x PNP
Digital outputs	2x SSR 12 / 24 Vdc - 25 mA max
Auxiliary Outputs	12/24 Vdc - 30mA max for sensor supply
Relay Output	4x 5 A - 250 Vac resistive load 3x 5 A - 250 Vac resistive load
Analogue outputs	1x Selection 4..20 mA (40000 punti $\pm 0,2\%$ F.S.) o 0..10 V DC (40000 points $\pm 0,2\%$ F.S.) for command or retransmission PV / SPV
Serial communication	RS485 (1200..115200 Baud) opto isolated
USB	1x micro USB for programming via PC



*Not configured in the default version for plastics machines.
Contact our technical department for more information

	1	2	3	4	5	6	7	8	9	10	11	12	13	14	15	16	
ORDER CODE	C	D	8	6	0	2	4	2	3	0	4	8	5	C	T	S	
VERSION	3	4															
Description	cod																
CD68 PID Controller 48x96 1AI, 1AO, 2DI, 2DO, 4 Relays	8	6															
POWER SUPPLY	5	6	7	8	9	10											
Description	cod																
24 Vac/dc e 115÷230 Vac	0	2	4	2	3	0											
COMMUNICATION											11	12	13				
Description											cod						
RS485											4	8	5				
CURRENT TRANSFORMER											14	15					
Description											cod						
CT input 005											C	T					
LOOP											16						
Description											cod						
Single Loop											S						



Controllers, Drives & Automation

 Products made in Italy

Worldwide distribution and service

CD Automation Country Locations



CD Automation, a leader in the control of heating elements, has been offering top quality solutions in the field of industrial temperature control for over thirty years. The company supplies thyristor power units and SCR power controllers, making it the leading partner in the industry.

CD Automation offers a support service for the development, optimisation, sustainability and energy efficiency of thermal processes, improving plant power quality.

Our team will be at your disposal to deepen, analyse and optimise your applications.

Headquarter: Italia
CD Automation Srl
Via Picasso, 34/36
20025 Legnano MI - Italy
T +39 0331 577479
F +39 0331 579479
sales@cdautomation.com
www.cdautomation.com

United Kingdom
CD Automation UK Ltd.
Unit 9 Harvington Business Park
Brampton Road, Eastbourne
East Sussex, BN22 9BN - England
T +44 1323 811100
info@cdautomation.co.uk
www.cdautomation.co.uk

India
M/s Toshcon CD Automation Pvt. Ltd.
H1 - 75 Gegal Industrial Area
Ajmer - 305023 (Raj.) - India
T +91 145 2791112
T +91 145 6450601/2/3
sales.cd@toshcon.com
www.cdautomation.in